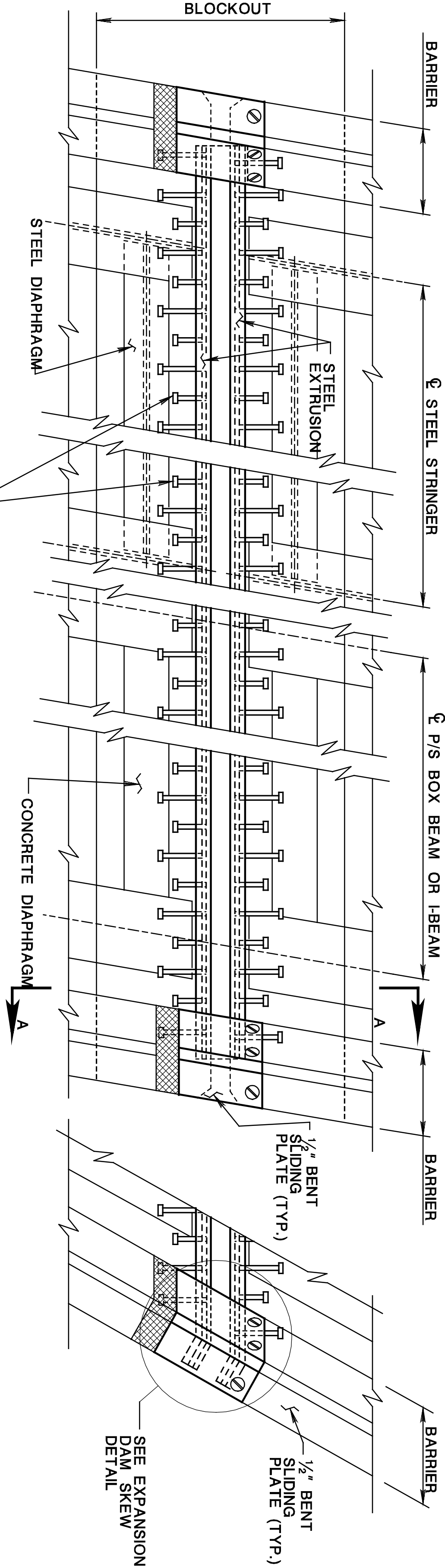


STATE	FEDERAL PROJECT NO.	SHEET	TOTAL SHEETS
N. J.			
STRUCTURE NO.			



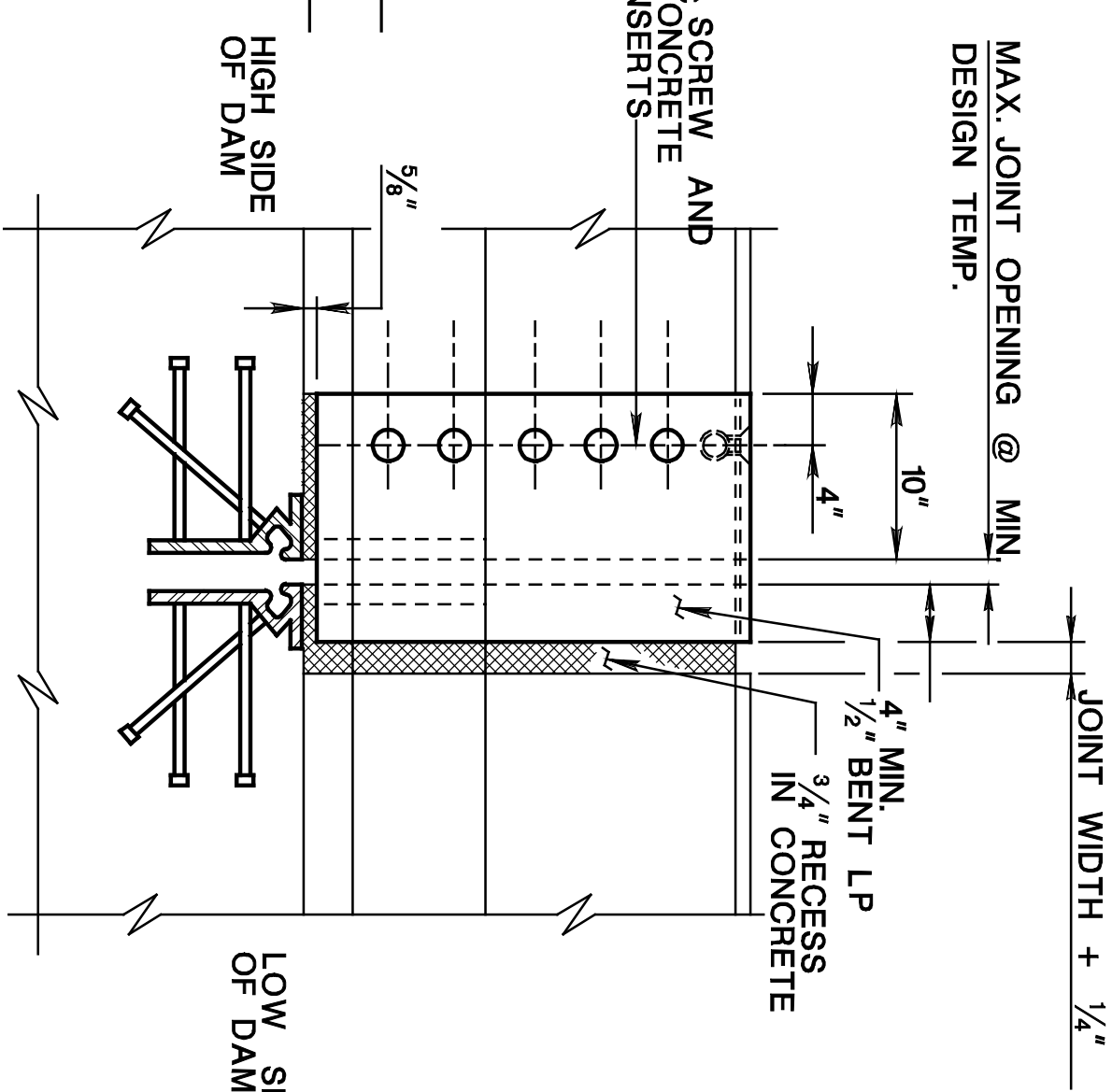
\*\* STUDS @ 12" C.C.-ALTERNATE  
(SEE SHEET 2 EXTRUSION DETAIL)(TYP.)

SKW ANGLES  $\geq 75^\circ$

\*\* IF 10" STUDS CANNOT BE ACCOMMODATED IN THE SPACE AVAILABLE, REQUEST SPECIFIC LENGTH APPROVAL FROM THE RESIDENT ENGINEER AT THE WORKING DRAWINGS APPROVAL STAGE.

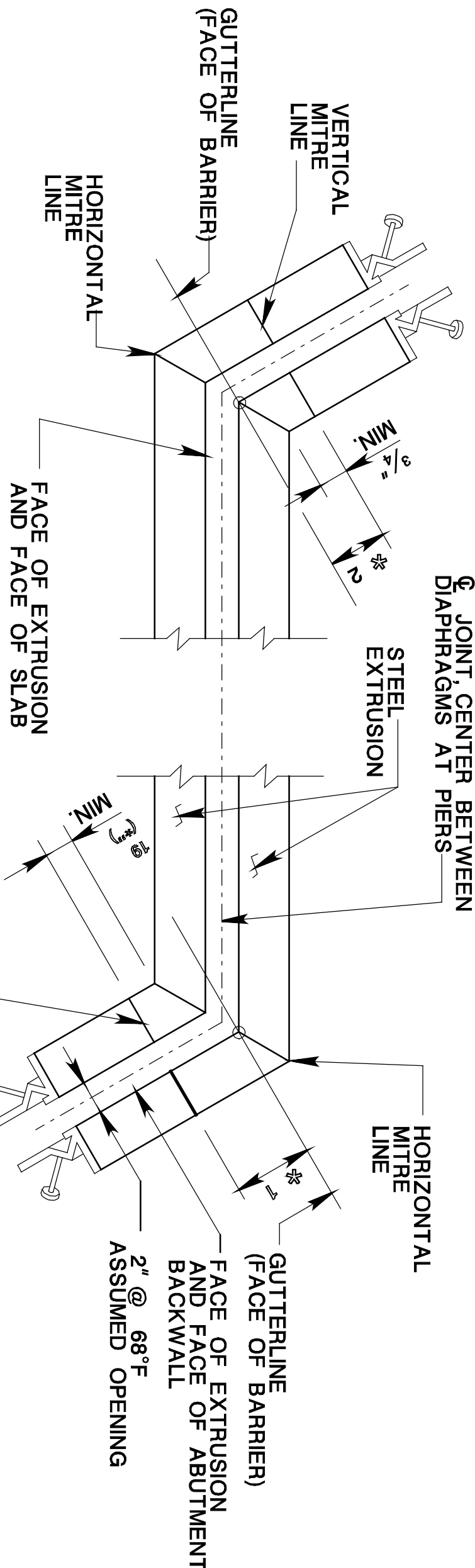
#### PLAN AT BARRIER

SKW ANGLES  $< 75^\circ$



NOTE:  
FORM CONCRETE RECESS AREA IN BARRIER AND GRIND TO PROVIDE SMOOTH SURFACE. APPLY ONE COAT OF ASPHALT CEMENT PAINT OR PERFORMANCE GRADED ASPHALT CEMENT PG TO ALLOW BENT SLIDING PLATE TO MOVE FREELY WITHOUT FRICTION.

#### SECTION A-A



#### PLAN

\* OFFSET DIMENSION WILL VARY WITH SKEW AND CORNER TYPE. ALL VALUES ARE APPROXIMATE.

1: 30° SKEW = 3.5"

75° SKEW = 1.6"

2: 30° SKEW = 2.0"

75° SKEW = 1.25"

#### EXPANSION DAM SKEW DETAIL

JOINT AT ABUTMENT SHOWN WITH 30° SKEW, JOINT AT PIERS SIMILAR

#### GENERAL NOTES:

- REFER TO SECTION 21 OF THIS MANUAL FOR GENERAL GUIDANCE.
- PAIN OR GALVANIZE ALL STEEL SURFACES ACCORDING TO THE STANDARD SPECIFICATIONS.
- ALL STEEL SHALL CONFORM TO AASHTO M270 GRADE 36 OR 50.
- USE FLATBED STAINLESS STEEL ASTM F 798M OR F 593 (TYPE 304) FOR COUNTER SUNK SCREWS WITH INSERTS. ALL CONCRETE INSERTS AND M 20 COUNTERBUNK MACHINE SCREWS ARE 3/4" DIAMETER UNLESS OTHERWISE NOTED.
- INSTALL CONTINUOUS NEOPRENE STRIP SEAL IN THE FIELD. SPLICING OF SEAL IS NOT PERMITTED. TEMPORARY SEAL MAY BE REQUIRED DEPENDING ON STAGES OF CONSTRUCTION.
- PROVIDE ALL WELDING IN THE SHOP. PROVIDE NON-DESTRUCTIVE TESTING OF WELDS IF REQUIRED BY THE ENGINEER. IN ACCORDANCE WITH AASHTO/AWS SPECIFICATIONS. EXPANSION DAMS GREATER THAN 40'-0" IN LENGTH, MAY AT THE DISCRETION OF THE FABRICATOR, HAVE THE RETAINERS FOR THE STRIP SEALS WELDED IN THE FIELD. REFER TO NOTE 8 FOR SPECIAL REQUIREMENTS AND DETAILS FOR TRANSVERSE BUTT WELDS.
- A LONGITUDINAL FULL PENETRATION WELD IS REQUIRED TO JOIN THE TOP AND BOTTOM (PLATE) OF THE RETAINER TOGETHER WHEN IT IS FINISHED IN TWO PIECES; 25% OF THE WELD TO BE TESTED ULTRASONICALLY, AND IF DEFECTS ARE FOUND, 100% OF THE WELD TO BE TESTED. TRANSVERSE BUTT WELDS FOR SPLICING THE RETAINER TO BE PARTIAL PENETRATION DOUBLE V-GROOVE WELDS ON PREPARED BEVELED EDGES. EXTENDING ALL AROUND THE JOINT AS FAR AS PRACTICAL TO ACHIEVE A WATERTIGHT SEAL. FULL PENETRATION GROOVE WELD FOR SPLICING THE RETAINER IN LIEU OF PARTIAL PENETRATION DOUBLE V-GROOVE WELDS MAY BE USED IF SHOWN ON APPROVED SHOP DRAWINGS. DO NOT WELD INSIDE SEAL CAVITY. WHENEVER A TRANSVERSE JOINT OCCURS, TWO ADDITIONAL STUDS MUST BE ADDED ON EACH SIDE OF THE JOINT.
- MOVEMENT CLASSIFICATION OF SEAL TO BE NOT LESS THAN THE CLASSIFICATION SPECIFIED ON THE DESIGN DRAWINGS.
- MINIMUM MOVEMENT CLASSIFICATION IS 3".
- FABRICATOR TO PROVIDE A CHART SHOWING JOINT OPENING FOR TEMPERATURES BETWEEN 10°F TO 110°F FOR STEEL STRUCTURES, 10°F TO 100°F FOR P/S CONCRETE STRUCTURES. IN 10°F INTERVALS ON SHOP DRAWINGS. SET WIDTH 68°F. ALSO FURNISH MOVEMENT OF SEAL ON SKEW AND CERTIFY THAT SEAL IS CORRECT FOR DESIGN.
- BOND NEOPRENE STRIP SEAL TO EXTRUSION WITH APPROVED ADHESIVE.
- THE SEALS FURNISHED WITH THE RETAINERS MUST BE COMPATIBLE WITH THE RETAINER AND PROVIDE A WATERTIGHT JOINT.
- PLACE CURBS AND SIDEWALKS WITH STEEL SLIDING PLATES WITH INSERTS AND BOLTS IN PLACE TO INSURE PROPER ALIGNMENT OF INSERTS AND HOLES IN THE STEEL SLIDING PLATE. REMOVE PLATES TO INSTALL SEAL. APPLY BONDBREAKER TO SLIDING PLATES PRIOR TO INSTALLATION.

DETAILING AND NOTED REQUIREMENTS THAT ARE PROVIDING ON THESE DRAWING MAY BE USED IN THE PREPARATION AND REVIEW OF WORKINGS. DESIGNERS AND SUPPLIERS OF THE JOINT SYSTEM ASSEMBLY SHALL ACCORDINGLY UTILIZE THE DRAWINGS TO FACILITATE THE SUBMISSION.



#### STANDARD DRAWING PLATE 2-6-1

NEW JERSEY DEPARTMENT OF TRANSPORTATION  
BUREAU OF STRUCTURAL ENGINEERING

#### STRIP SEAL EXPANSION JOINT ASSEMBLY FOR PRESTRESSED CONCRETE & STEEL BEAM BRIDGES

ROUTE : \_\_\_\_\_ SECTION : \_\_\_\_\_

MUNICIPALITY \_\_\_\_\_ COUNTY \_\_\_\_\_

SCALE : NONE  
BRIDGE  
SHEET NO. OF \_\_\_\_\_